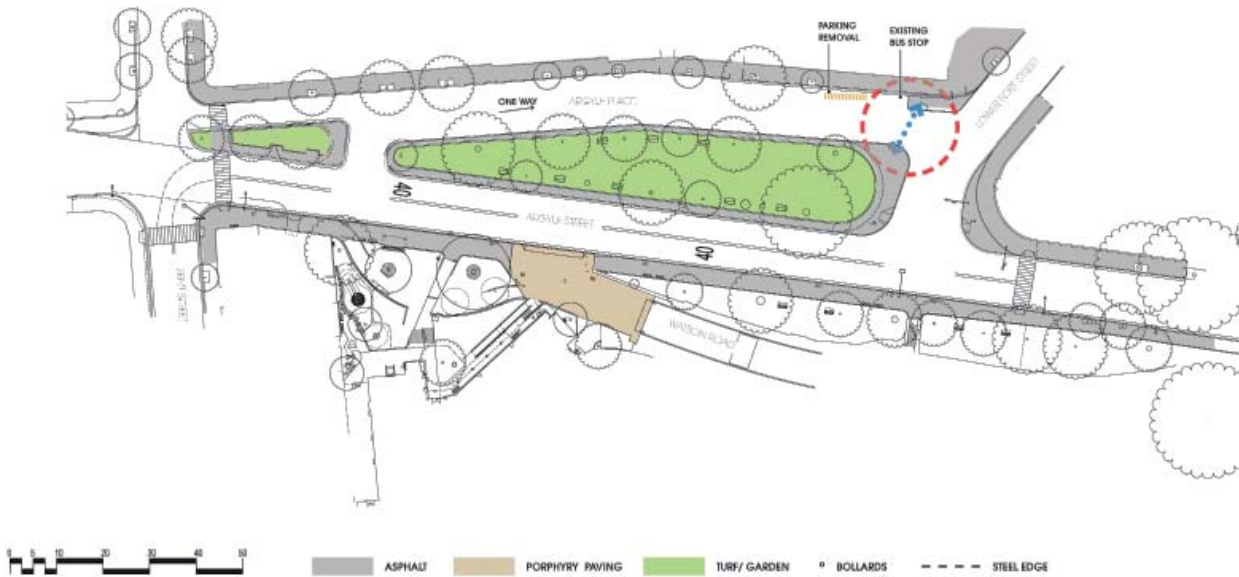


ATTACHMENT B

**OPTIONS ANALYSIS FOR ARGYLE PLACE
IMPROVEMENTS**



This option proposes to:

1. increase the footpath blisters on Argyle Place park and Lower Fort Street and implement two additional kerb ramps.

Opportunities

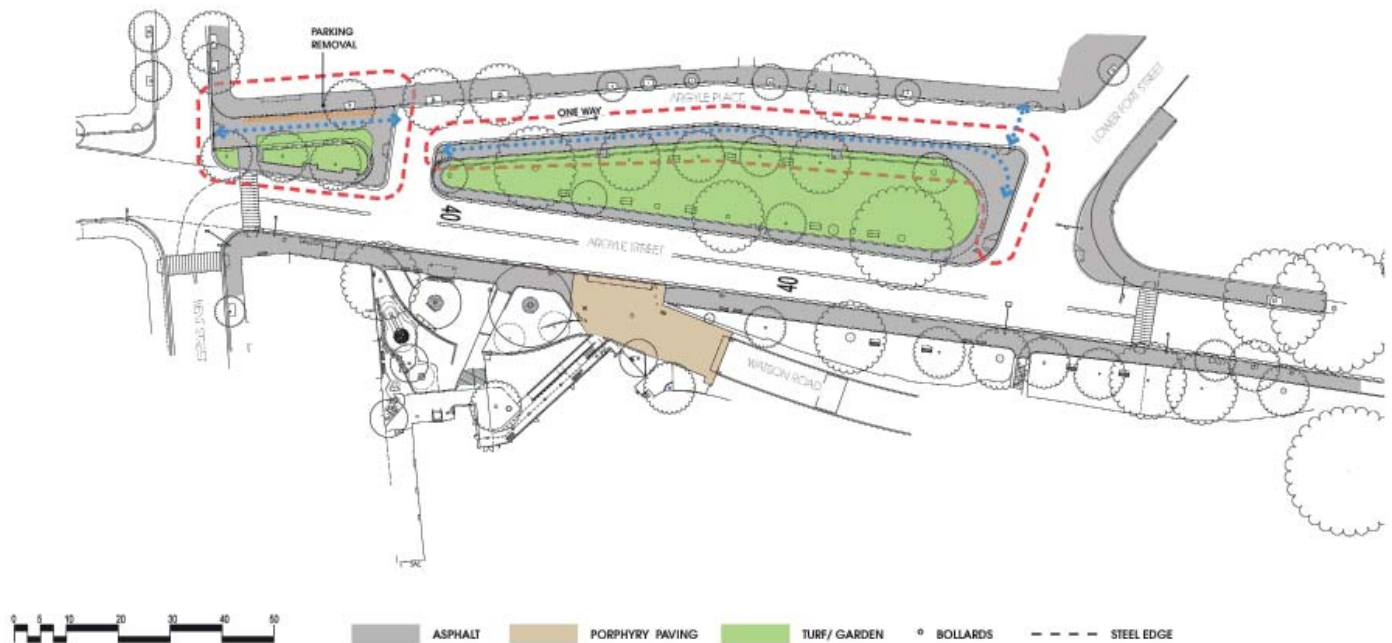
- Maintains current bus operations (relocation of bus stop opposite park would be required).
- Minimal disturbance to heritage fabric due to minimal changes to kerb alignments.
- Narrowing the Argyle Place intersection will reduce traffic speed at the intersection of Lower Fort Street.

Constraints

- The bus relocation on Argyle Place would require the removal of 1 car parking space.

Financial

This option can be funded within the existing budget.



This option proposes to:

1. Increase the width of the northern footpath on Argyle Place Park by an additional 2.5m;
2. Implement new kerb ramps on Argyle Place east and west improving pedestrian accessibility; and
3. Closing Argyle Place west to traffic.

Opportunities

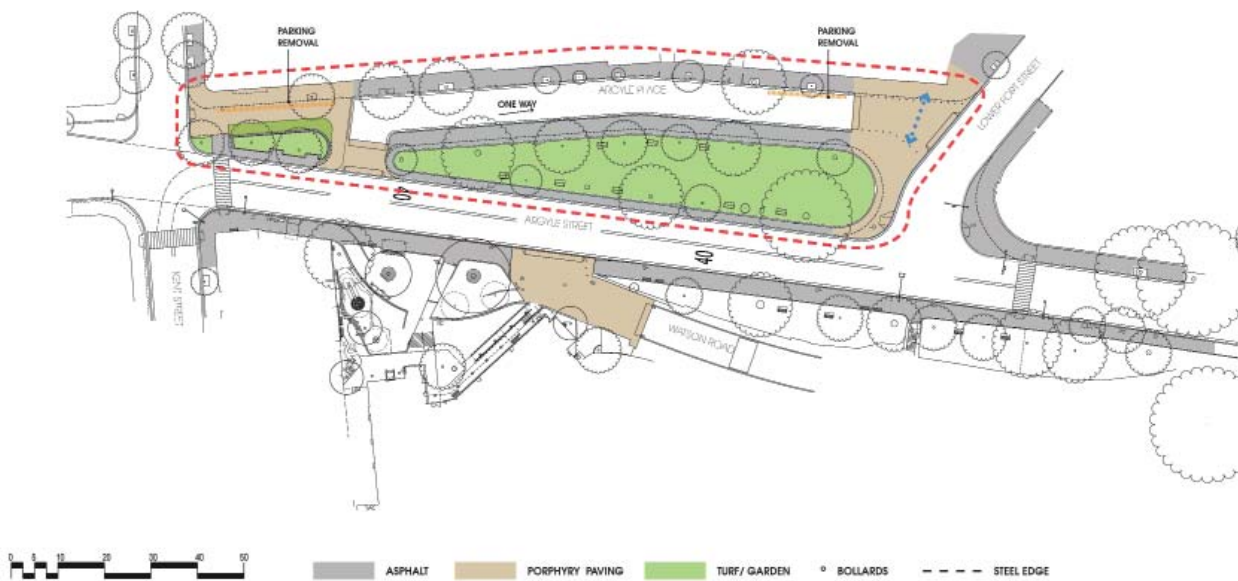
- Maintains current bus operations
- Enhances pedestrian movement
- Additional width of footpath creates seating opportunities and additional pedestrian movement area.
- Improves crossing of Kent Street at Argyle Place west.

Constraints

- Adjustments to kerb line would require detailed heritage approvals and testing of site conditions.
- Interpretation of former kerb lines required.
- Stormwater adjustments to realigned kerb at Argyle Place west.
- Loss of parking (approximately 3 car spaces) for closed section of road, Argyle Place west.

Financial

The cost has been estimated at 3 times the cost of option1.



This option proposes to:

1. Raise the pavement at intersections of Argyle Place, change the material to setts, defining a slow speed traffic environment and establishing pedestrian priority;
2. Increase width of northern footpath along Argyle Place Park by an additional 2.5m.

Opportunities

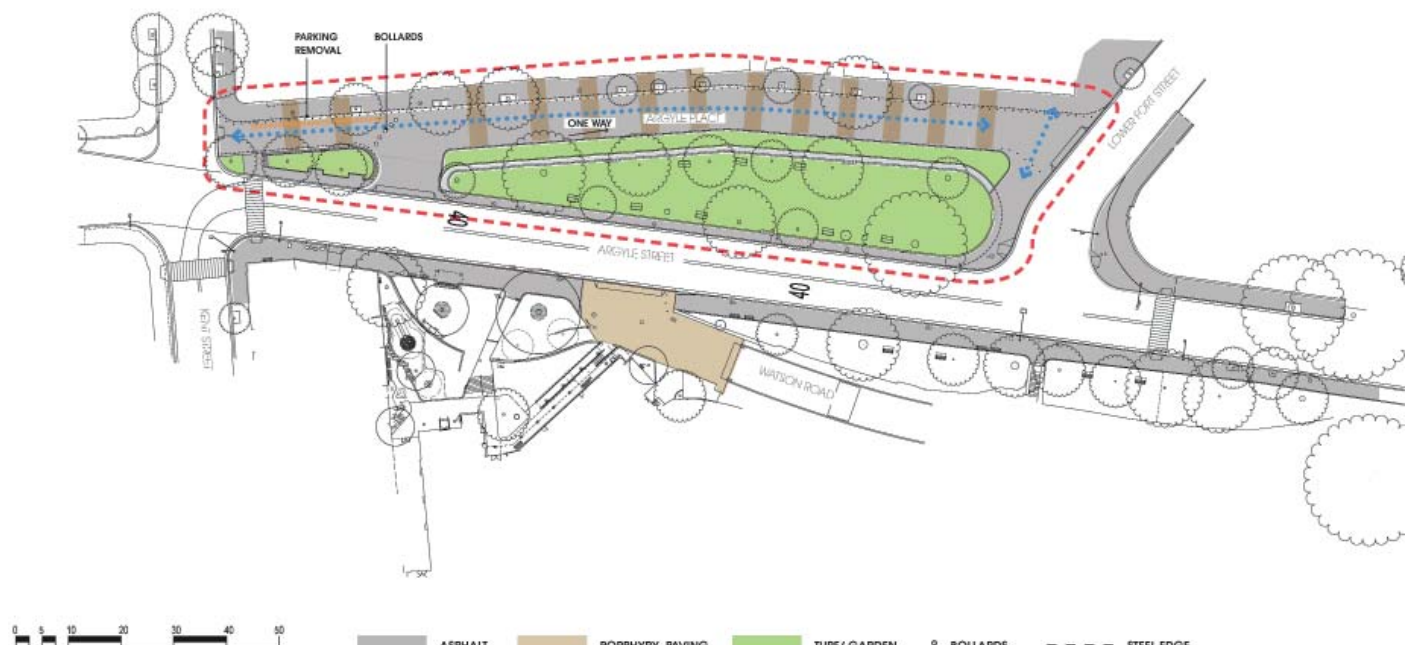
- Maintains current bus operations
- Enhances pedestrian movement across intersections, Argyle Place , Lower Fort Street and Argyle Place west.
- Additional width of footpath creates seating opportunities and additional pedestrian movement area.
- Enhances crossing of Kent Street at Argyle Place west.

Constraints

- Bus relocation on Argyle Place north would require the removal of approximately 3 parking spaces.
- Loss of parking for footpath continuations (3 spaces) total 5-6 car parking spaces would be removed
- Heritage concerns, loss of clarity of the 'Island' park form in the road
- Adjustments to kerb line would require detailed heritage approvals and testing of site conditions
- Stormwater adjustments to Argyle Place required with footpath continuations.
- STA and RMS approvals for bus routes across footpath continuations.

Financial

The cost has been estimated at 5.5 times the cost of option 1 .



This option proposes to:

1. Raise footpath levels along Argyle Place creating a Shared Zone;
2. Road and footpath environment surface treatment to be constructed of a different material (sett stripes) to differentiate the shared zone from a road environment;
3. Buses excluded from shared zone, rerouting of buses required; and
4. Extension of park green space.

Opportunities

- Additional green space created with the extension of the park
- Enhances pedestrian movement and priority throughout shared zone environment
- Cohesive environment, extension of park

Constraints

- Exclusion of bus operation along Argyle Place, approval by STA would need to be sought
- Shared Zone would require RMS approval
- Adjustments to kerb line would require detailed heritage approvals and testing of site conditions
- Heritage approvals would require the interpretation of the former kerb lines, issues may arise with the loss of clarity of the ‘island park’ form in the road.
- Stormwater adjustments to Argyle Place
- Defined parking bays would be required within the shared zone, this may result in parking losses
- Parking losses on Argyle Place west with proposed road closure.

Financial

The cost has been estimated at 6 times the cost of option 1.